

Geochemistry and weathering history of the Balfour sandstone formation, Karoo basin, South Africa: Insight to provenance and tectonic setting

Monica E. Oghenekome, Tapas K. Chatterjee, Jan M. van Bever Donker and Napoleon Q. Hammond

Abstract:

Geochemical analysis on sandstones from clastic sediments was carried out to understand the tectonic setting and subsequent post-depositional change in the Karoo basinal fill of the fluvial deposits of the Balfour Formation during the Late Permian to Early Triassic period. The major and trace element analysis reveal a relatively homogeneous provenance for the sandstones. The geochemical analysis shows that these rocks are first order mature sediments, derived from igneous and/or meta-igneous rocks of a felsic composition. The results show that the sandstone consists of SiO₂ (71.58 wt. %), followed by Al₂O₃ (14.48 wt. %), but with low contents of Fe₂O₃+MgO (4.09 wt. %) and TiO₂ (0.47 wt. %). These sandstones are classified as litharenites and arkoses based on the elements constituent ratio of various schemes adopted. The sandstone in the provenance discrimination diagram plots in the dissected and transitional arc fields suggesting an active margin and continental island arc provenance, preserving the signature of a recycled provenance. The Chemical Index of Alteration (CIA) ranging from 63.56 to 67.10% suggests recycling processes, and that the source area has undergone a moderate degree of chemical weathering. The geochemical characteristics of the sediment suggest the source area of uplifted terrane of folded and faulted strata with detritus of sedimentary and metasedimentary origin.

The mineralogical compositions of sedimentary rocks do not reflect the mineralogy of the original source rocks due to post-depositional modification of the constituent grains. The geochemical composition of siliciclastic sedimentary rocks aids in the understanding of the setting and nature of source rocks. Many studies have shown that geochemical analysis of the siliciclastic rocks helps in the identification of their provenance and related depositional and post depositional processes (e.g., Banerjee and Banerjee, 2010; Jafarzadeh and Hosseini-Barzi, 2008; Liu et al., 2007; Rahmani and Suzuki, 2007; Cingolani et al., 2003; Raymond, 1995).

While the geochemical component/characteristics can be altered during weathering through oxidation (Taylor and McLennan, 1985), the bulk chemical composition is

unaltered (McLennan et al., 1983). Geochemical analyses allow the clarification of the rocks composition not resolvable through petrographic analysis (Akarish and El-Gogary, 2008). Several studies have been carried out on various aspects of the Karoo basin sediments (e.g., Catuneanu and Elango (2001); Rubidge et al. (2000); Hiller and Stavrakis (1984); Haycock et al. (1997); Smith (1995); Visser and Dukas (1979); Kitching (1977); Tordiffe (1978); Keyser and Smith (1978)). None of those studies clarified the sources of the sediments using geochemical methods.

In this study, the geochemistry of selected representative sandstone samples from the Balfour Formation of the Karoo Supergroup was carried out using X-ray fluorescence spectrometry (XRF) analysis. This work contributes to the understanding of the depositional model of the Karoo Supergroup and the sedimentary environment along the southern margin of Gondwana.

1.1. Generalized geology and stratigraphy

The sediments studied are part of the southern Karoo Basin developed in response to the Late Palaeozoic to Early Mesozoic subduction episode of the palaeo-Pacific plate underneath the Gondwana plate (Catuneanu and Bowker, 2001; Catuneanu and Elango, 2001; Pysklywec and Mitrovica, 1999; Winter 1984; Lock, 1978). Fragments of the Gondwana foreland basin today are preserved across the world as the Parana Basin (South America), Karoo Basin (Southern Africa), Beacon Basin (Antarctica) and Bowen Basin (Australia) (Catuneanu, 2004; Catuneanu and Elango, 2001; Catuneanu et al., 1998).

Table 1
Lithostratigraphic subdivision of the Balfour Formation of the Karoo Supergroup, Eastern Cape Province, (Oghenekome et al., 2016).

Period	Super-group	Group	Subgroup	Formation East of 24°E	Member	Environment of deposition	
Jurassic	K	Drakensberg		Clarens		Volcanic	
				Elliot		Aeolian	
Triassic	R			Molteno		Arid-fluvial	
				O			
P	O	B	TARKASTAD	Burgersdorp		F	
				Katberg		L	
		A	ADELAIDE	B	Palingkloof	U	
				A	Elandsberg	V	
		E	U				
		R	F	L	Barberskrans	I	
		M	O	F	Daggaboersnek	A	
		I	R	O	Oudeberg	L	
		A	T	U			
		N		R			
				E	Middleton		Transitional (Deltaic)
				C	Koonap		
		C	Waterford		Deep-shallow marine		
		A	Fort Brown				
Carboniferous		Dwyka		Ripon			
				Collingham			
				Whitehill			
				Prince Albert		Floating iceberg marine	

The Karoo Basin responded to eight tectonic events related to the Panthalassan (Palaeo-Pacific) plate beneath Gondwana from the time of deposition of the Dwyka through to the Elliot Formation (Table 1) (Andersson and Worden, 2006; Bamford, 2004; Catuneanu et al., 2002; Smith et al., 1993; Catuneanu et al., 1998; SACS, 1980). These tectonic events

produced variation in the depositional sedimentary successions within the Karoo setting (Catuneanu et al., 1998) and suggest changes in climate. The fourth tectonic orogenic paroxysm event is assigned to Balfour sedimentation (Catuneanu et al., 1998) from which the study is based. The clastic sediments from the Balfour Formation developed during the Late Permian (Tatarian) to Early Triassic (Scythian) period and representing the upper part of the Adelaide Subgroup (Table 1) of the Beaufort Group in the southeastern part of the Karoo Supergroup along the southern margin of Gondwana continent in South Africa (Oghenekome et al., 2016; Catuneanu et al., 1998, 2002, 2005; Catuneanu and Bowker, 2001; Catuneanu and Elango, 2001; Rubidge, 2005; Pysklywec and Mitrovica, 1999; Johnson et al., 1996; Smith et al., 1993; Johnson, 1991; Tankard et al., 1982). The Balfour Formation comprises two fining upward megacycles of sedimentary deposits with a change in the sediment supply pattern from low-sinuosity to high-sinuosity river systems, which reflect both braided and meandering river deposits. Lithostratigraphically, it is subdivided into five members viz, the Oudeberg, Daggaboersnek, Barberskrans, Elandsberg, and Palingkloof Members (Table 1) (Oghenekome et al., 2016; Johnson et al., 2006; De-Kock and Kirschvink, 2003; Tordiffe et al., 1985; SACS, 1980). Sandstones from each Member were studied to understand the provenance of the Balfour Formation.

2. Methodology and results

The geochemical analysis was on selected representative samples from exposures in the vicinity of the towns of Adelaide and Bedford (Fig. 1). The trace element analysis was from pressed pellets whereas major elements analyses were from fused glass disks. The rock samples were reduced to chips of > 10 mm and pulverized in a tungsten carbide crusher for the major and trace elements. These pulverized samples were analyzed at the Council for Geoscience in Pretoria, South Africa.

2.1 Major elements

The bulk geochemical data from the XRF analyses of major and minor element concentrations are shown in Tables 2 and 3. The sandstones are rich in SiO₂ followed by Al₂O₃ in order of abundance. SiO₂ ranges from 68.41 to 76.20 wt. % and has an overall average SiO₂ concentration of 71.58 wt. % in the analyzed samples. The Oudeberg Member, which is the youngest member of the Formation, has a SiO₂ concentration of 69.38 wt. % in the lower parts and 73.67 wt. % in the upper succession of the measured section. Al₂O₃ composition ranges between 13.17 and 15.44 wt. %. The sandstone also contains low percentages of TiO₂, MnO and MgO. There is no significant variation of phosphorus oxide (P₂O₅) across the samples. The sandstones are depleted in CaO which ranges from 0.87 to 2.27 wt. %.

2.2. Trace elements

It is accepted that trace elements composition reflects the signature of the parent materials (Bhatia and Crook, 1986; Raymond, 1995) and makes them relevant for provenance and depositional setting studies. The trace elements are not affected by diagenesis and metamorphism (McLennan et al., 2001). The trace elements such as La, Y, Sc, Sr, Cr, Th, Zr,

Hf, Nb and TiO₂ among other major elements are best suited for provenance and tectonic setting, analyses due to their low mobility during sedimentation processes (McLennan et al., 1983; Holland, 1978). The Sr content is very high in the sandstone of the Balfour Formation, ranging from 226 to 421 ppm, (Table 3). The Th/U ratio is important as it defines the state of weathering under oxidizing conditions. This Th/U ratio increases upwards in the Formation succession. The ratio of Zr/Sc increases from 0.95 to 1.90 ppm with an accompanying decrease in the Th/Sc ratio. A discrimination plot of Zr/Sc against Th/Sc after McLennan et al. (1983) (Fig. 2) is used to determine the composition of the source rocks and provides insight into the degree of fractionation of the intrusive precursors. The relative abundance of zircon in the sandstone is also reflected by the high Zr/Sc ratio, which ranges from 19.69 to 29.22 ppm. A plot of SiO₂ versus Zr/Sc (Fig. 3) suggests significant reworking and selective sorting during transportation.

2.3. Classification of the sandstone

The geochemical classification of the Balfour Formation sandstone is based on the Logarithmic plots of Fe₂O₃/K₂O versus Al₂O₃/SiO₂ after Herron (1988) (Fig. 5). The Herron sand classification system (Herron, 1988) shows the relationship between element composition, mineralogy and rock type. A variant plot of SiO₂ against total (Al₂O₃+K₂O₃+Na₂O) (Fig. 6) proposed by Suttner and Dutta (1986) is used to study the maturity of the sandstones as seen in Fig. 6.

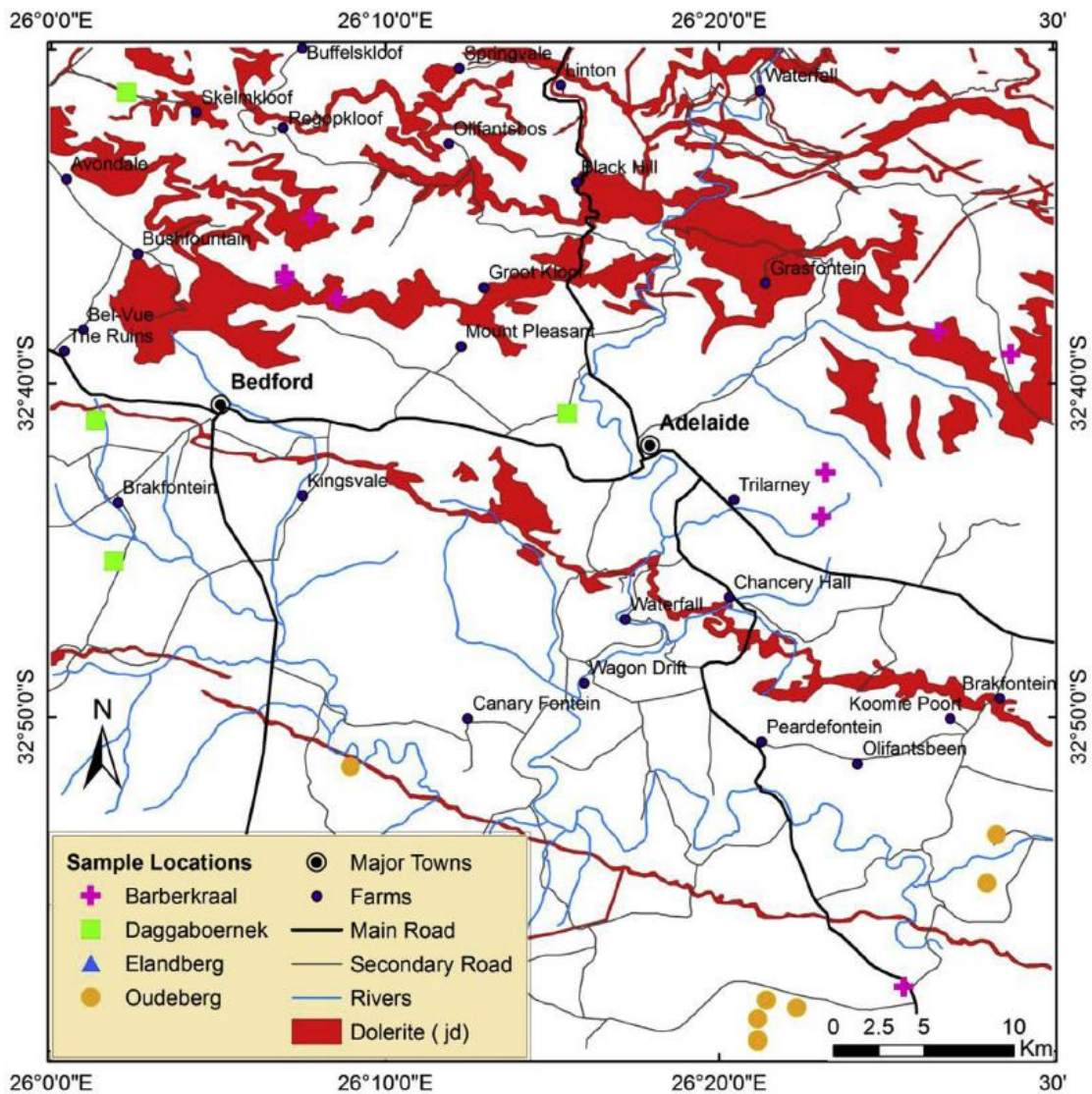


Fig. 1. Sample locations in the vicinity of the towns of Bedford and Adelaide on the various members of the Balfour Formation, Eastern Cape Province.

2.4. Provenance and tectonic setting

Certain mobile elements such as Fe, Ca, Na, K and Mg, and immobile trace elements such as Th, Sc, Zr, Hf, V, Cr and Co are useful for provenance and tectonic setting determination (George and Christian, 2001; Asiedu et al., 2000; Bhatia, 1983, Bhatia and Crook, 1986; Taylor and McLennan, 1985). This is due to their low mobility during sedimentary processes, and low residence time in seawater as suggested by Cingolani et al. (2003). The geochemical composition of some of these elements (silicon oxide, aluminium oxide, iron oxide, magnesium oxide, chromium, nickel, titanium, scandium and Vanadium) in the studied samples was plotted on discrimination diagrams to determine tectonic setting per Bhatia (1983). In addition, plots of TiO_2 versus Fe_2O_3+MgO and Al_2O_3/SiO_2 versus Fe_2O_3+MgO (Fig. 4a and b) were also used for the investigation, pointing toward active continental margin and continental island arc setting. Immobile trace elements in the sandstones show enrichment in Cr ranging between 36 and 58 ppm. The relative

abundances of V, Cr, Ni, Ti, and Sc suggest mafic input into the sedimentary detritus (Bhatia and Crook, 1986; Taylor and McLennan, 1985; Bhatia, 1983).

2.5. Weathering conditions in the source area

Chemical weathering affects the composition of siliciclastic sediments, and changes the principal constituent of the sedimentary rock (Fedo et al., 1995). The weathering effects on the source rocks are evaluated using the Chemical Index of Alteration (CIA) as applied to non-calcareous rocks (Yang and Du, 2017; Scheffler et al., 2003; Fedo et al., 1995). The CIA value reflects the degree of chemical weathering of the detritus incorporated into the source rock (Cingolani et al., 2003) and therefore provides an estimate of the climatic conditions during the formation of the sedimentary rocks. The CIA index of the sandstones was calculated as $CIA = [Al_2O_3 / (Al_2O_3 + CaO + Na_2O + K_2O)] \times 100$; and its value ranges from 64% to 67% (Table 2) with an overall average of 66.15% for the sandstones. The high values of the CIA reflect increasing proportions of clay minerals with respect to feldspar, which can lead to an increased proportion of Al_2O_3 kaolinite) as seen in this study.

Table 2

Major-element concentration of Balfour Formation sandstone members, Values in oxide weight percent. ODST: Oudeberg sandstone, DGST: Daggaboersnek sandstone, BBST.

Samples	ODST: 1	ODST: 2	ODST: 3	DGST: 1	DGST: 2	DGST: 3	BBST: 1	BBST: 2	BBST: 3	ELST: 1	ELST: 2	ELST: 3	Average
SiO ₂	73.50	69.38	68.38	73.31	73.33	70.80	68.41	70.67	70.47	70.31	76.20	74.47	71.60
TiO ₂	0.45	0.53	0.54	0.32	0.43	0.49	0.57	0.39	0.38	0.59	0.30	0.31	0.44
Al ₂ O ₃	13.17	14.88	14.85	14.16	14.49	15.44	15.33	14.84	14.85	14.98	13.29	12.99	14.44
Fe ₂ O ₃ (t)	2.77	3.73	3.74	2.54	2.75	2.95	4.54	3.43	3.40	3.96	1.89	1.98	3.14
MnO	0.06	0.06	0.06	0.06	0.04	0.04	0.06	0.08	0.08	0.08	0.03	0.04	0.06
MgO	0.71	1.01	1.04	0.75	0.60	0.88	1.40	1.23	1.24	1.25	0.42	0.55	0.92
CaO	1.74	2.26	2.30	2.32	0.87	1.15	2.17	1.37	1.35	1.56	1.32	2.31	1.73
Na ₂ O	3.16	3.63	3.32	3.85	5.65	4.88	2.31	4.88	4.85	3.34	3.01	3.09	3.83
K ₂ O	2.27	2.50	2.52	1.38	1.03	1.71	2.97	1.40	1.45	2.72	2.46	2.54	2.08
P ₂ O ₅	0.10	0.11	0.10	0.86	0.10	0.11	0.18	0.09	0.10	0.16	0.08	0.08	0.17
Cr ₂ O ₃	0.00	0.00	0.00	< 0.001	< 0.001	0.00	0.00	0.00	0.00	0.00	< 0.001	< 0.001	0.00
L.O.I.	2.28	2.20	2.24	1.25	1.19	1.75	1.94	1.58	1.95	1.49	1.88	2.29	1.84
Total	100.22	100.30	100.30	100.79	100.48	100.19	99.89	99.98	100.12	100.44	100.89	100.64	100.35
H ₂ O-	1.19	0.71	0.71	0.45	0.60	0.89	0.94	0.52	0.56	0.62	1.65	0.86	0.81
SiO ₂ /Al ₂ O ₃	5.58	4.66	4.60	5.18	5.06	4.58	4.46	4.76	4.75	4.69	5.73	5.73	4.98
Al ₂ O ₃ /TiO ₂	25.31	44.12	42.11	26.77	38.05	39.08	44.72	33.91	31.79	29.42	27.86	27.30	34.20
Na ₂ O/K ₂ O	1.39	1.45	1.32	2.80	5.48	2.85	0.78	3.49	3.34	1.23	1.23	1.21	2.21
Al ₂ O ₃ /SiO ₂	0.18	0.21	0.22	0.19	0.20	0.22	0.22	0.21	0.21	0.21	0.17	0.17	0.20
K ₂ O/Na ₂ O	0.72	0.69	0.76	0.36	0.18	0.35	1.29	0.29	0.30	0.82	0.82	0.82	0.62
Na ₂ O + CaO	4.91	5.89	5.62	6.17	6.52	6.03	4.48	6.26	6.20	4.89	4.33	5.39	5.56
Fe ₂ O ₃ + MgO	3.48	4.74	4.78	3.29	3.35	3.83	5.94	4.66	4.64	5.21	2.31	2.52	4.06
Al ₂ O ₃ + Na ₂ O + K ₂ O	18.60	21.01	20.70	19.39	21.17	22.03	20.61	21.12	21.15	21.04	18.76	18.62	20.35
Fe ₂ O ₃ /K ₂ O	1.22	1.49	1.48	1.85	2.67	1.72	1.53	2.45	2.34	1.46	0.77	0.78	1.65
CIA	64.72	63.94	64.57	65.24	65.75	66.63	67.29	65.97	66.00	66.31	66.18	62.07	65.39

Barberskrans sandstone, ELST: Elandsberg sandstone.

Table 3

Trace element data of sandstone members from the Balfour Formation, Eastern Cape Province, South Africa; all concentrations are in parts per million (ppm).

Samples	ODST:1	ODST:2	ODST:3	DGST:1	DGST:2	DGST:3	BBST:1	BBST:2	BBST:3	ELST:1	ELST:2	ELST:3	Average
As	8.2	5.5	6.1	6.2	6.5	6.4	< 4	< 4	< 4	< 4	< 4	< 4	6.5
Ba	446	626	623	595	555	565	610	403	407	643	562	732	563.9
Bi	< 3	< 3	< 3	< 3	< 3	< 3	< 3	< 3	< 3	< 3	< 3	< 3	0.0
Ce	75	55	56	49	54	56	61	53	56	69	41	42	55.6
Co	11	10	10	6.8	8.2	8.2	11	14	12	12	4.8	6	9.5
Cr	48	56	50	45	36	42	43	48	46	58	41	39	46.0
Cs	< 5	< 5	< 5	< 5	< 5	< 5	< 5	< 5	< 5	< 5	< 5	< 5	0.0
Cu	8.7	8.5	8.6	3.1	11	11	12	17	16	9.8	12	4.6	10.2
Ga	15	18	16	15	16	15	18	17	17	17	12	14	15.8
Ge	1.1	1.6	1.5	2.4	1.3	1.3	< 1	1.3	1.4	1	< 1	1.4	1.4
Hf	< 3	3.7	< 3	8.1	3.3	3.5	7.2	3.7	3.5	5.9	< 3	4.5	4.8
La	47	34	32	35	39	35	43	33	43	42	27	27	36.4
Mo	< 2	< 2	< 2	< 2	< 2	< 2	< 2	< 2	< 2	< 2	< 2	< 2	0.0
Nb	8.7	9.8	8.6	8.8	10	8.7	13	9.3	12	12	6.7	8.6	9.7
Nd	33	28	32	26	29	28	33	26	28	34	22	22	28.4
Ni	12	12	9.5	9.9	9.7	9.7	15	15	15	15	6.9	8.5	11.5
Pb	16	18	18	16	18	19	21	17	20	19	14	15	17.6
Rb	74	81	85	43	65	68	127	59	57	107	79	97	78.5
Sc	8.2	9.5	9.6	7	7.4	7.5	9.1	8.7	8.5	7.8	5.5	5.1	7.8
Se	< 1	< 1	< 1	< 1	< 1	< 1	< 1	< 1	< 1	< 1	< 1	< 1	0.0
Sm	< 10	< 10	< 10	< 10	< 10	< 10	< 10	< 10	< 10	< 10	< 10	< 10	0.0
Sr	226	421	263	249	308	265	332	281	286	262	288	284	288.8
Ta	< 2	< 2	< 2	< 2	< 2	< 2	< 2	< 2	< 2	< 2	< 2	< 2	0.0
Th	11	9.4	9.1	9.2	11	11	13	11	13	14	7.8	9.7	10.8
Tl	< 3	< 3	< 3	< 3	< 3	< 3	< 3	< 3	< 3	< 3	< 3	< 3	0.0
U	< 2	< 2	< 2	< 2	< 2	< 2	< 2	< 2	< 2	< 2	< 2	< 2	0.0
V	68	75	65	61	60	60	67	71	65	73	39	42	62.2
W	< 3	< 3	< 3	4.9	< 3	< 3	< 3	< 3	< 3	< 3	< 3	< 3	4.9
Y	16	19	18	17	20	25	28	19	26	25	16	17	20.5
Yb	< 3	< 3	< 3	< 3	< 3	< 3	< 3	< 3	< 3	3.2	< 3	< 3	3.2
Zn	45	55	46	41	50	50	70	60	70	60	34	36	51.4
Zr	169	216	189	188	210	215	220	136	230	217	146	149	190.4
Cr/Ni	4.00	4.67	5.26	4.55	3.71	4.33	2.87	3.20	3.07	3.87	5.94	4.59	4.2
Th/u	1.34	0.99	0.95	1.31	1.49	1.47	1.43	1.26	1.53	1.79	1.42	1.90	1.4
Zr/Th	15.36	22.98	20.77	20.43	19.09	19.55	16.92	12.36	17.69	15.50	18.72	15.36	17.9
Th/Sc	1.34	0.99	0.95	1.31	1.49	1.47	1.43	1.26	1.53	1.79	1.42	1.90	1.4
Zr/Sc	20.61	22.74	19.69	26.86	28.38	28.67	24.18	15.63	27.06	27.82	26.55	29.22	24.8

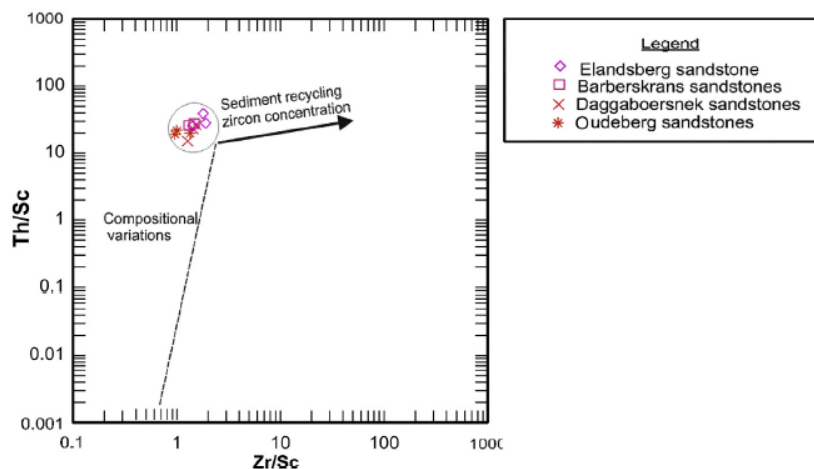


Fig. 2. Discrimination plot of Zr/Sc against Th/Sc ratios (after McLennan et al., 1983). Plot shows concentration of zircon with high Zr/Sc ratio in the trailing edge (arrow) indicating the dominant heavy mineral in the sandstone, which is attributable to sedimentary sorting and recycling.

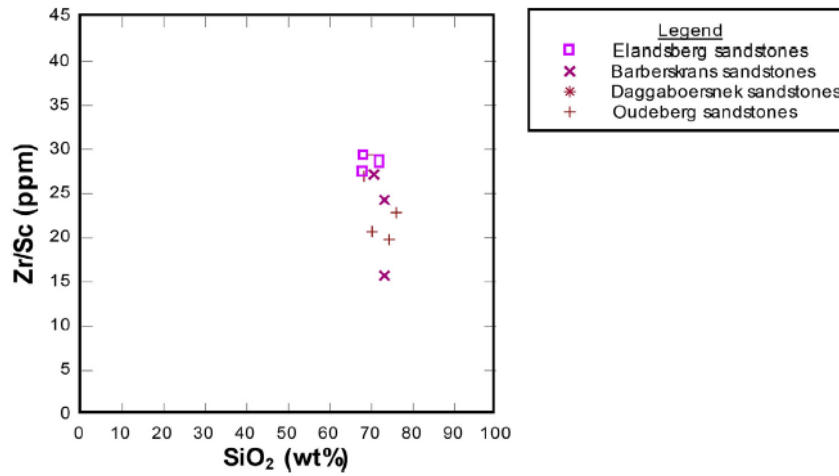


Fig. 3. Scatter plot of SiO₂ versus Zr/Sc showing zircon concentration increasing upward in the section in the Balfour Formation using the method proposed by Cingolani et al. (2003).

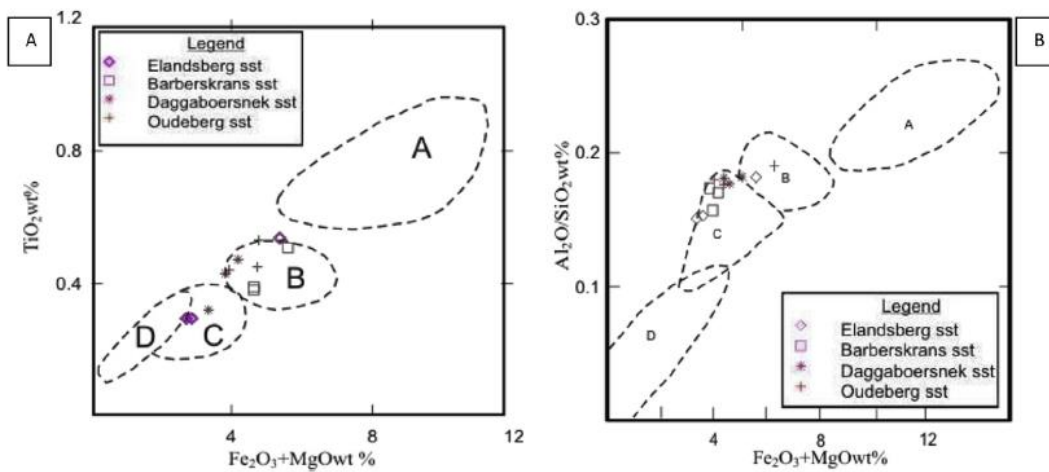


Fig. 4. Provenance discrimination diagram plots of sandstone in the Balfour Formation based on Bhatia (1983). (4a) TiO₂ versus Fe₂O₃ + MgO and (4b) Al₂O₃/SiO₂ versus Fe₂O₃ + MgO; Fields A, B, C and D represent fields for various plate tectonic regimes. A (Oceanic Island Arc); B (Continental Island Arc); C (Active Continental Margin); D (Passive Margin). The abbreviation in the legend "sst" represents sandstone.

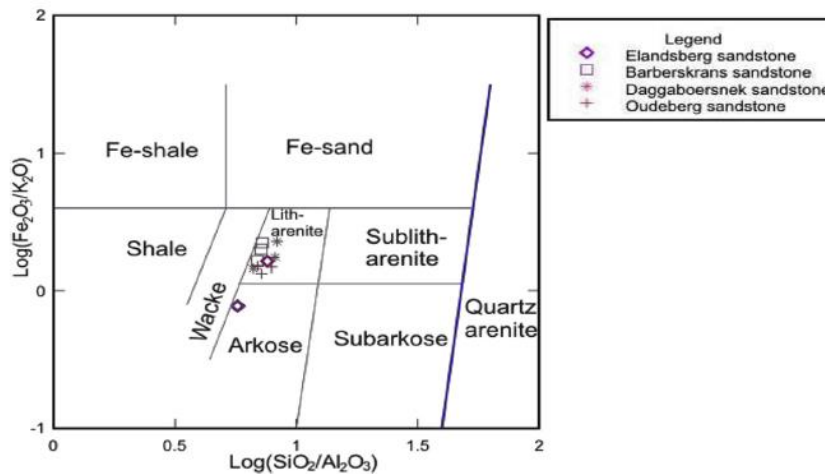


Fig. 5. Geochemical classification of the Balfour sandstones using the Herron classification (Herron, 1988). The sandstones plot in the litharenite and arkose fields.

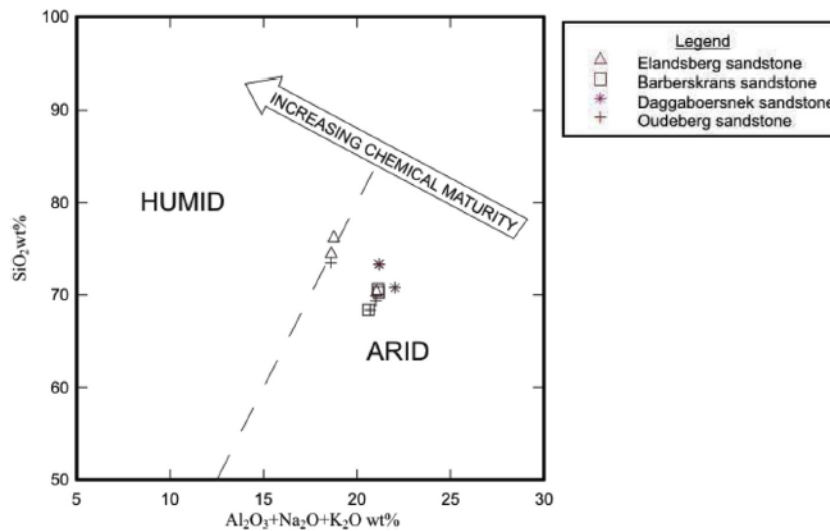


Fig. 6. Bi-variant plot of $\text{Al}_2\text{O}_3 + \text{K}_2\text{O} + \text{Na}_2\text{O}$ versus SiO_2 showing the chemical maturity trend of the Balfour sandstone on the diagram as proposed by Suttner and Dutta (1986).

According to Fedo et al. (1995) the closer the CIA value is to 100, the more weathered the source rock. The results show that the samples experienced moderate to high degrees of weathering, either from the original source or during transport but before deposition. The CIA value when plotted in an A-CN-K diagram (Figs. 7 and 8), is used to deduce the chemical weathering trend (Nyakairu and Koeberl, 2001). The initial stage of weathering is inferred from bulk source composition and the extent of post-depositional K-metasomatism, if present (Akarish and El-Gohary (2008); McLennan et al. (1983)). The samples plot in the lower part of the igneous composition field which indicates a lower degree of alteration. The CIA value of 65.39% and corresponding SiO_2 compositional value that ranges from 68.41% to 76.20% (Figs. 8 and 9) suggest weathered an ancient granitic source.

3. Discussion

The overall average of SiO_2 (71.58%) implies that all the sandstones are rich in silicate minerals derived from either a silica-rich provenance or weathered granite-gneiss or pre-existing sedimentary terrane (Rahmani and Suzuki, 2007). The $\text{K}_2\text{O}/\text{Na}_2\text{O}$ ratio is a chemical provenance indicator. The scheme proposed by Crook (1974) was followed, this scheme subdivides sandstones into quartz-poor, quartz-intermediate and quartz-rich based on their SiO_2 contents (Fig. 10). When used in conjunction with the $\text{K}_2\text{O}/\text{Na}_2\text{O}$ ratio, as each ratio is assigned to a specific plate tectonic environment, in our case all of the sandstone samples plot in the quartz-intermediate class (SiO_2 content of 71.58% and $\text{K}_2\text{O}/\text{Na}_2\text{O} > 1$; Table 2). The ratio of incompatible versus compatible elements is useful for differentiating between felsic and mafic source components (George and Christian, 2001). Thus, a low value of the TiO_2 and a high value of Al_2O_3 suggest an igneous origin. The $\text{Al}_2\text{O}_3/\text{TiO}_2$ ratio increases from 3 to 8 for mafic igneous rocks, from 8 to 12 for intermediate igneous rocks and from 21 to 70 for felsic igneous rocks (Hayashi et al., 1997). The $\text{Al}_2\text{O}_3/\text{TiO}_2$ ratio of 32.1 suggest a felsic igneous origin for sedimentary rocks of the Balfour

Formation. The abundance of chromium (Cr) and nickel (Ni) in siliciclastic sediments are considered a useful indicator in provenance studies (Nagarajan et al., 2007). Wrafter and Graham (1989) indicated that high contents of Cr and Ni are mainly associated with sediments derived from ultramafic rocks while Armstrong-Altrin et al. (2004) indicated that a low concentration of Cr indicates a felsic provenance.

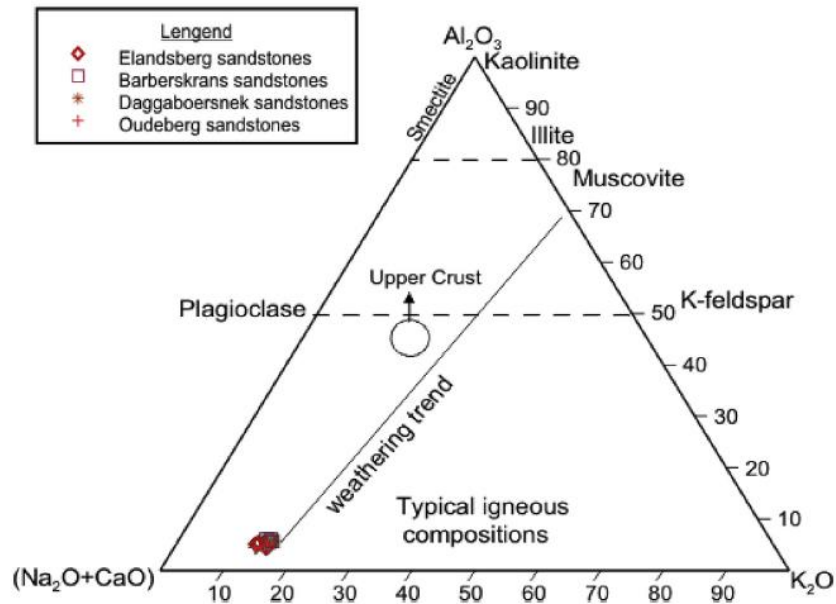


Fig. 7. A-CN-K triangle plot of the extent depiction (after Cingolani et al., 2003), showing the weathering trend and that the Balfour sandstone source was of igneous composition.

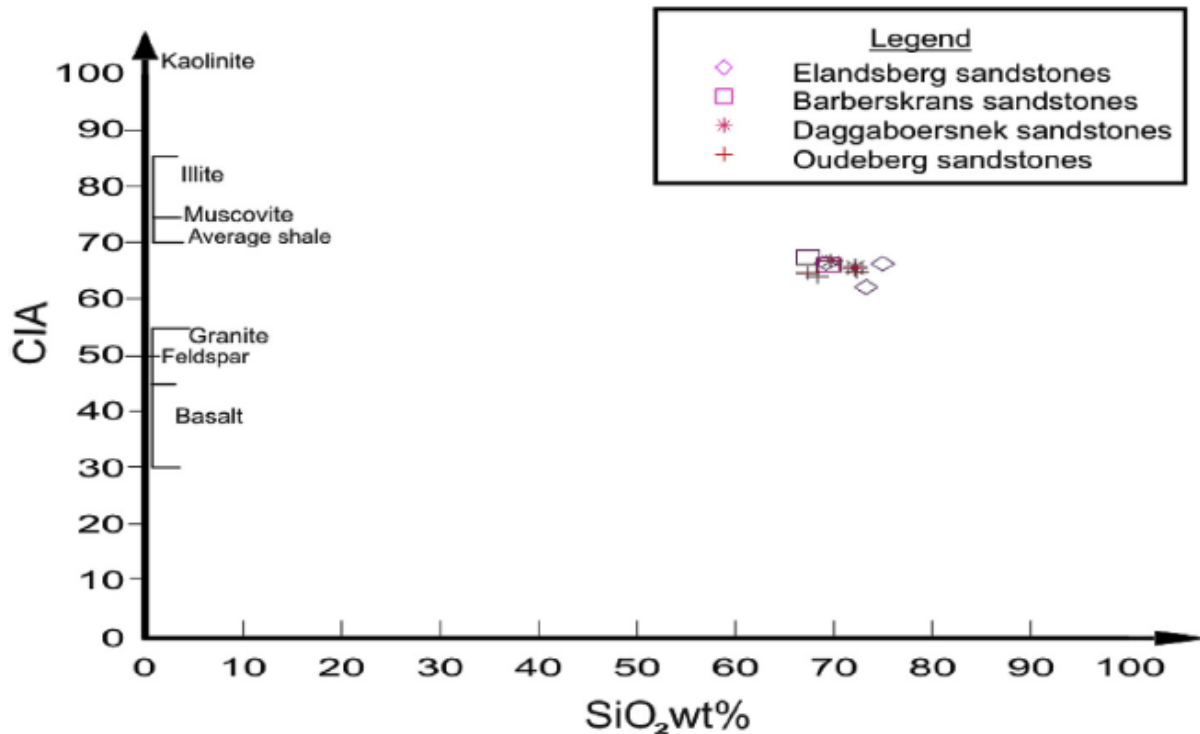


Fig. 8. Plot of SiO₂ versus CIA for Balfour and Katberg Formation sandstones (after Nesbitt and Young, 1982).

The content of Cr in the studied sediments ranges from 36 to 58 ppm with an overall average of 46.0 ppm. Given the Cr/Ni ratio which ranges from 2.87 to 5.94 (Table 3) is an indication of depletion of metal/silicate volatile siderophile elements, we are suggesting an absence of a mafic source. According to Puchelt (1972) strontium and barium mostly reside in plagioclase and K-feldspar, respectively. Thus, the Sr concentration may have resulted from either the weathering of plagioclase, since plagioclase is more easily weathered than K-feldspar. It may also be a recrystallization of clay and progressive destruction of feldspars, or can be attributed to low-temperature depositional environments. The concentrations value of the transition elements which include Cr, Co, Ni and V are a strong indication of a granitic source, as shown in the triangular plot of Al_2O_3 -(CaO + Na₂O)-K₂O (Fig. 7). Thorium and scandium are good indicators of the degree of igneous chemical differentiation processes and it is also an indication of terrigenous deposition (McLennan et al., 1983). A sedimentary rock with Th/Sc ratio of > 1 reflects input from evolved crustal igneous rocks (McLennan et al., 1983). The ratio being less than 0.8 gives an indication that the source is either a mafic rock or a mature or recycled source (Cingolani et al., 2003; Taylor and McLennan, 1985). The analyzed samples have relatively moderate Th/Sc ratios (average 1.4 ppm) and therefore reflect input from an evolved crustal igneous source. The Th/U ratio in most upper crustal rocks is typically between 3.5 and 4.0 (McLennan et al., 1983). Hence, the Th/U ratio of 0.90–1.90 is an indication of the intensity of the weathering in the source area and/or sediment recycling. Zircon is among the common heavy minerals, derived from granitic, volcanic, and metamorphic recycled sources. Thus, in the Balfour Formation sandstones, enrichment of Zr is shown by high Zr/Sc ratios. The Zr/Sc versus SiO₂ reworking and/or selective sorting and clear input from upper crustal igneous sources.

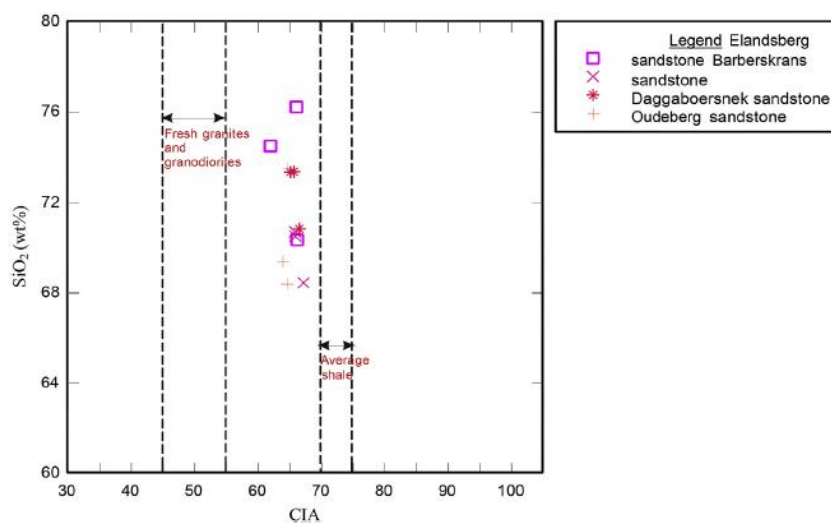


Fig. 9. CIA (Chemical Index of Alteration) versus SiO₂ of Balfour sandstones indicates a moderate weathering (after Nesbitt and Young, 1982; Taylor and McLennan, 1985).

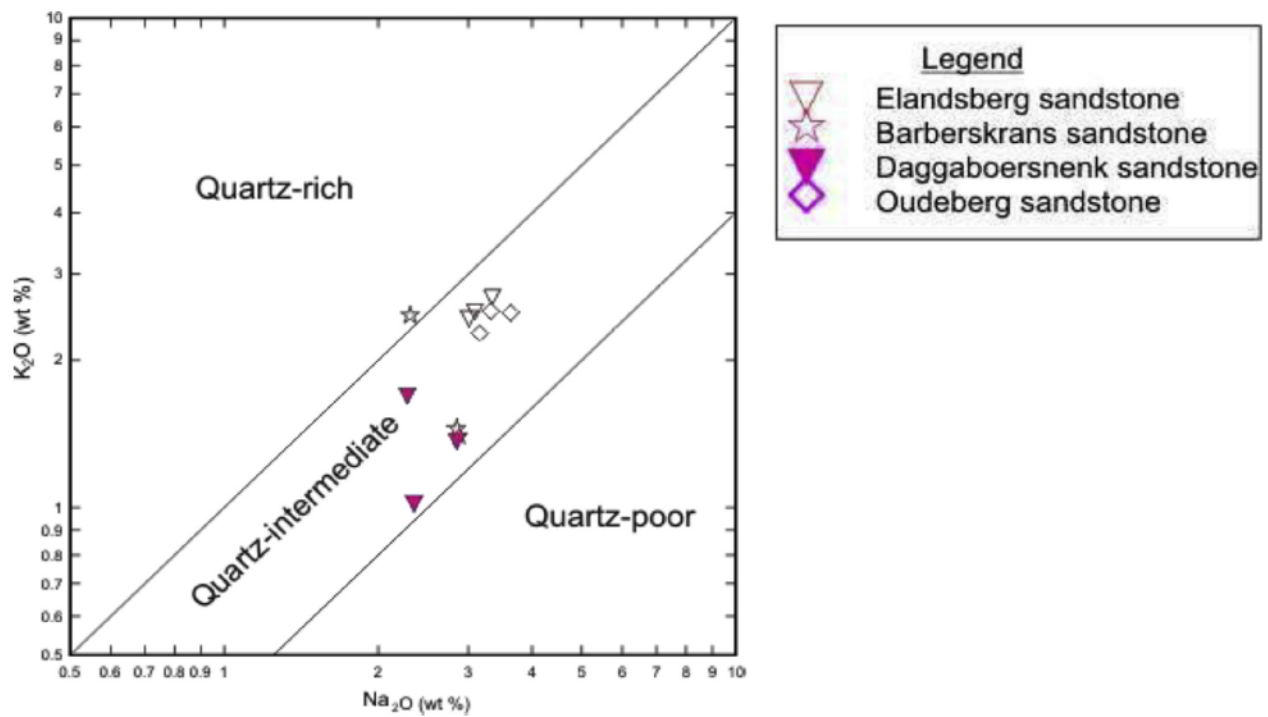


Fig. 10. Quartz content variation amongst sandstone units of the Balfour Formation (after Crook, 1974). The plot shows that the Oudeberg Member has higher quartz content than the Barberskrans and Elandsberg Members while Daggaboersnek Member has low quartz content.

The depletion of Cs and concentration of Rb suggest the alteration of mica to K-feldspar given the fractionation of these elements. Elements such as As and Sb are concentrated in sediment enriched in iron oxides (George and Christian, 2001), thus the depletion of As is an indication that the sediment is low in Fe₂O₃ and thus the absence of highly oxidizing conditions. Smectite content also gives an indication that the iron concentration in the clay minerals is relatively low, as shown in the major-element analyses. The low amount of CaO and Na₂O indicates low calcite components, while the high concentration of Ba and low concentration of Th and U suggest that the concentration of these trace elements is linked to clay minerals and mica (Rahmani and Suzuki, 2007; McLennan et al., 1983). This further suggests that the derivation of the sediments could be associated with a weathered granite-gneiss terrane or a pre-existing sedimentary terrane. The presence of smectite and diagenetically generated zeolite and the presence of other clay minerals may be a result of both either diagenetic or hydrothermal alteration of feldspar and other aluminum silicate minerals. The presence of zeolite can also be an indication of a volcanic source rock. The CIA, which varies from 63.56 to 67.1%, and points towards sediment recycling processes (Nesbitt et al., 1980) and suggests moderately weathered sources in a relatively warm climate. However, from the A-CN-K plot for the Balfour rocks (sandstone), it is clear that weathering did not proceed to a stage at which the significant components that made up the rock were removed from its sediments. The values of the weathering indices along with the elemental molar ratios suggest moderate to slightly high weathering conditions in the source area and/or during transportation. Tectonic discrimination diagrams (Fig. 4) suggest a source from an active continental margin to continental Island arc for the Balfour sandstones. The substantial increase in the Zr/Sc ratio and accompanying decrease

in the Th/Sc ratio indicates that the sediment was derived from a passive margin region (McLennan et al., 1983) as confirmed by Smith (1995). The Th/Sc ratio, ranging from 0.99 to 1.9 ppm, with an overall average of 1.40 ppm, suggests that the sediments were homogenized by sedimentary recycling. The most used index of sedimentary maturation is the $\text{SiO}_2/\text{Al}_2\text{O}_3$, the average value being 4.97 suggested granitic or rhyolitic sources.

4. Conclusion

The geochemical characteristics of the detrital sediments of the sandstone were utilized to infer provenance and weathering conditions in the Eastern Karoo Basin. Geochemical evidence suggests that the compositional maturity of these sandstones is due to recycling and short transportation time. The study also revealed that the sediments are both physically and chemically immature and show signs of reworking. The source area was mainly affected by post-depositional chemical weathering. The most important geochemical result is the concentration of Ba, Sr and Zr, which remained immobile despite the moderate degree of weathering. The relative homogeneity of the source area can be seen by the major- and trace-element concentrations and reflects the enrichment of chemically immobile elements (Al, Zr and Sr) and the depletion of mobile elements (Ca, Fe, Na, K and Mg). The origin of the sediments has been shown to be due to moderate weathering and recycling of older rocks, eroded and transported debris, as well as some soluble constituents in this part of the Karoo Basin. The trace element analysis diagrams suggest that the sediments were derived from felsic (granitic) source rocks and were deposited in an active continental margin to Continental Island arc setting. The rocks are dominated by quartzo-feldspathic wackes and provenance data indicates the Cape Fold Belt as the source area. In a regional context of the evolution of the sandstone Formation, the data support the conclusion that the Formation was deposited in a foreland basin generated after the accretion of the Gondwana. It can be concluded that the sediments of the sandstone from Balfour Formation in the Karoo Basin were derived from predominantly igneous, metamorphic, and older sedimentary rocks, therefore suggesting an absence of a mafic source.

Acknowledgements

Many thanks go to Govan Mbeki Research and Development Fund at the University of Fort Hare for their financial support during the study. Thanks to the Council of Geoscience of South Africa for availing their laboratories to carry out all analyses. Thanks also go to constructive reviewers, all of which led to improvements of the manuscript.

References

- Akarish, A.I.M., El-Gogary, A.M., 2008. Petrography and geochemistry of lower Paleozoic sandstones, East Sinai, Egypt: implications for provenance and tectonic setting. *J. Afr. Earth Sci.* 52, 43–54.
- Andersson, P.O.D., Worden, R.H., 2006. Stratigraphic variations in mudstone mineral assemblages from a submarine fan-complex: Karoo basin, South Africa. *Clay Miner.* 41, 839–852.
- Armstrong-Altrin, J.S., Lee, Y.I., Verma, S.P., Ramasamy, S., 2004. Geochemistry of sandstones from the Upper Miocene Kudankulam Formation, southern India: implication for provenance, weathering and tectonic setting. *J. Sediment. Res.* 74 (2), 285–297.
- Asiedu, D.K., Suzuki, S., Nogami, K., Shibata, T., 2000. Geochemistry of lower cretaceous sediments, inner zone of southwest Japan: constraints on provenance and tectonic environment. *Geochem. J.* 34, 155–173.
- Bamford, M.K., 2004. Diversity of the woody vegetation of Gondwana, southern Africa. *Gondwana Res.* 7, 153–164.
- Banerjee, A., Banerjee, D.M., 2010. Modal analysis and geochemistry of two sandstones of the Bhandar Group (Late Neoproterozoic) in parts of the Central India, Vindhyan basin and their bearing on the provenance and tectonics. *Journal of Earth System Science* 119, 825–839.
- Bhatia, M.R., 1983. Plate tectonics and geochemical composition of sandstones. *J. Geol.* 91, 611–627.
- Bhatia, M.R., Crook, K.A.W., 1986. Trace element characteristic of graywackes and tectonic setting discrimination of sedimentary basins. *Contrib. Mineral. Petrol.* 92, 181–193.
- Catuneanu, O., Hancox, P.J., Rubidge, B.S., 1998. Reciprocal flexural behavior and contrasting stratigraphies: a new basin development model for the Karoo retroarc foreland system, South Africa. *Basin Res.* 10, 417–439.
- Catuneanu, O., Bowker, D., 2001. Sequence stratigraphy of the koonap and middleton fluvial formations in the Karoo foredeep, South Africa. *J. Afr. Earth Sci.* 33, 579–595.
- Catuneanu, O., Elango, H.N., 2001. Tectonic control on fluvial styles: the Balfour Formation of the Karoo basin, South Africa. *Sediment. Geol.* 140, 291–313.
- Catuneanu, O., Hancox, P.J., Cairncross, B., Rubidge, B.S., 2002. Foredeep submarine fans and forebulge deltas: orogenic off-loading in the underfilled Karoo Basin. *J. Afr. Earth Sci.* 35, 489–502.
- Catuneanu, O., 2004. Basement control on flexural profiles and the distribution of foreland facies: the Dwyka Group of the Karoo Basin, South Africa. *J. Geol.* 32 (6), 517–520.
- Catuneanu, O., Wopfner, H., Eriksson, P.G., Cairncross, B., Rubidge, B.S., Smith, R.M.H., Hancox, P.J., 2005. The Karoo basins of south-central Africa. *J. Afr. Earth Sci.* 43, 211–253.
- Cingolani, C.A., Manassero, M., Abre, P., 2003. Composition, provenance and tectonic setting of Ordovician siliciclastic rocks in the San Rafael block: southern extension of the Precordillera crustal fragment, Argentina. *J. S. Am. Earth Sci.* 16, 91–106.

- Crook, K.A.W., 1974. Lithogenesis and geotectonics: the significance of compositional variation in flysch arenites (graywackes). *Society of Economic Paleontology and Mineralogist* 19, 304–310.
- De Kock, M.O., Kirschvink, J.L., 2003. Paleomagnetic constraints on the Permian-Triassic boundary in terrestrial strata of the Karoo Supergroup, South Africa: implications for causes of the End-Permian extinction events. *Gondwana Res.* 7, 175–183.
- Fedo, C.M., Nesbitt, H.W., Young, G.M., 1995. Unraveling the effects of potassium metasomatism in sedimentary rocks and paleosols, with implications for paleo weathering conditions and provenance. *Geology* 23, 921–924.
- George, W.A.N., Christian, K., 2001. Mineralogical and chemical composition and distribution of rare earth elements in clay-rich sediments from central Uganda. *Geochem. J.* 35, 13–28.
- Hayashi, K.I., Fujisawa, H., Holland, H.D., Ohmoto, H., 1997. Geochemistry of 1.9 Ga sedimentary rocks from northeastern Labrador, Canada. *Geochimica et Cosmochimica. Acta* 61, 4115–4137.
- Haycock, C.A., Mason, T.R., Watkeys, M.K., 1997. Early Triassic palaeoenvironments in the eastern Karoo foreland basin, South Africa. *J. Afr. Earth Sci.* 24, 79–94.
- Herron, M.M., 1988. Geochemical classification of terrigenous sands and shales from core or log data. *J. Sediment. Petrol.* 58, 820–829.
- Hiller, N., Stavrakis, N., 1984. Permo-Triassic fluvial systems in the southeastern Karoo Basin, South Africa. *Palaeogeogr. Palaeoclimatol. Palaeoecol.* 34, 1–21.
- Holland, H.D., 1978. *The Chemistry of the Atmosphere and Oceans*. Wiley, New York, pp. 350–351.
- Jafarzadeh, M., Hosseini-Barzi, M., 2008. Petrography and geochemistry of Ahawz sandstone Member of Asmari Formation, Zagros, Iran: implications on provenance and tectonic setting. *Mexicana de Ciencias Geologicas* 25, 247–260.
- Johnson, M.R., 1991. Sandstone petrography, provenance and plate tectonic setting in Gondwana context of the southeastern Cape Karoo Basin. *S. Afr. J. Geol.* 94, 137–154.
- Johnson, M.R., Van Vuuren, C.J., Hegenberger, W.F., Key, R., Shoko, U., 1996. Stratigraphy of the Karoo Supergroup in southern Africa: an overview. *J. Afr. Earth Sci.* 231, 3–15.
- Johnson, M.R., Anhaeusser, C.R., Thomas, R.J., 2006. *The Geology of South Africa: Geological Society of South Africa, Council for Geoscience, Pretoria*, vol. 691. pp. 461–500.
- Keyser, A.W., Smith, R.M.H., 1978. Vertebrate biozonation of the Beaufort Group with special reference to the western Karoo basin. *Geological Survey of South Africa* 12, 1–36.
- Kitching, J.W., 1977. *The Distribution of the Karoo Vertebrate Fauna: Memoir Bernard Price Institute Palaeontological Research*, vol. 1. University Witwatersrand, pp. 1–131.
- Liu, S., Lui, G., Liu, Y., Zhou, Y., Gong, F., Yani, Y., 2007. Geochemistry of middle oligocene-pliocene sandstones from the nanpu sag, bohai bay basin (eastern China): implications for provenance, weathering and tectonic setting. *Geochem. J.* 41, 359–378.

- Lock, B.E., 1978. The Cape Fold Belt of South Africa; tectonic control of sedimentation. *Geological Association of London* 89, 263–281.
- McLennan, S.M., Bock, B., Compston, W., Hemming, S.R., McDaniel, D.K., 2001. Detrital zircon geochronology of Taconian and Acadian foreland sedimentary rocks in new England. *J. Sediment. Res.* 71, 305–317.
- McLennan, S.M., Taylor, S.R., Eriksson, K.A., 1983. Geochemistry of archaean shales from the pilbara Supergroup, western Australia. *Geochimica et Cosmochimica Acta* 47 (7), 1211–1222.
- Nesbitt, H.W., Markovics, G., Price, R.C., 1980. Chemical processes affecting alkalis and alkali earth during continental weathering. *Geochem. Cosmochim. Acta* 44, 666.
- Nesbitt, H.W., Young, G., 1982. Early proterozoic climates and plate motions inferred from major element chemistry of lutites. *Nature* 299, 715–717.
- Nagarajan, R., Madhavaraju, J., Nagendra, R., Armstrong-Altrin, J.S., Moutte, J., 2007. Geochemistry of Neoproterozoic shales of the Rabanpalli Formation, Bhima Basin, Northern Karnataka, southern India: implications for provenance and paleo redox conditions. *Mexicana de Ciencias Geologicas* 24 (2), 150–160.
- Nyakairu, G.W.A., Koeberl, C., 2001. Mineralogical and chemical composition and distribution of rare earth elements in clay-rich sediments from central Uganda. *Geochem. J.* 13–28. 35.
- Oghenekome, M.E., Chatterjee, T.K., Hammond, N.Q., Van Bever Donker, J.M., 2016. Provenance study from petrography of the late permian to early triassic sandstones of the Balfour Formation Karoo Supergroup, South Africa. *J. Afr. Earth Sci.* 114, 125–132.
- Puchelt, H., 1972. Recent iron sediment formation at the Kameni island Santorini (Greece). In: *Ore Sediments VIII: International Union of Geological Sciences*, vol. 3. pp. 227–245.
- Pysklywec, R.N., Mitrovica, J.X., 1999. The role of subduction induced subsidence in the evolution of the Karoo basin. *J. Geol.* 107, 155–164.
- Raymond, A.L., 1995. The study of igneous sedimentary, metamorphic rocks, Wm.C. Brown Communication Inc., United States of America 264–388.
- Rahmani, M.J.J., Suzuki, S., 2007. Geochemistry of sandstone from the miocene surama Group, bengal basin, Bangladesh: implications for provenance, tectonic setting and weathering. *Geochem. J.* 41, 415–428.
- Rubidge, B.S., 2005. Re-uniting lost continents-fossil reptiles from the ancient Karoo and their wanderlust: 27th Du Toit Memorial Lecture. *Geological Society of South Africa* 135–172.
- Rubidge, B.S., Hancox, J.P., Catuneanu, O., 2000. Sequence analysis of the Ecca-Beaufort contact in the southern Karoo of South Africa. *S. Afr. J. Geol.* 103, 81–96.
- SACS (South African Committee for Stratigraphy), 1980. Stratigraphy of South Africa, Part 1: Lithostratigraphy of the Republic of South Africa, South West Africa/Namibia, and the Republics of Bophuthatswana, Transkei and Venda. *Handbook 8: Geological Survey of South Africa*. pp. 4–20.

- Scheffler, K., Hoernes, S., Schwark, L., 2003. Global changes during Carboniferous-Permian glaciation of Gondwana. linking polar and equatorial climate evolution by geochemical proxies. *Geology* 31 (7), 605–608.
- Smith, R.M.H., 1995. Changing fluvial environments across the Permian-Triassic boundary in the Karoo basin, South Africa and possible causes of tetrapod extinctions. *Palaeogeography, Palaeoclimatology, Palaeoecology* 117, 81–104.
- Smith, R.M.H., Eriksson, P.G., Botha, W.J., 1993. A review of the stratigraphy and sedimentary environments of the Karoo aged basins of Southern Africa. *J. Afr. Earth Sci.* 16, 143–169.
- Suttner, L.J., Dutta, P.K., 1986. Alluvial sandstone composition and palaeoclimate framework mineralogy. *J. Sediment. Petrol.* 56, 329–345.
- Tankard, A.J., Jackson, M.P.A., Eriksson, K.A., Hobday, D.K., Hunter, D.R., Minter, W.E.L., 1982. *Crustal Evolution of Southern Africa, 3.8 Billion Years of Earth History*. Springer-Verlag, New York, pp. 5–523.
- Taylor, S.R., McLennan, S.H., 1985. *The Continental Crust: its Composition and Evolution*. Blackwell Scientific Publications, Oxford.
- Tordiffe, E.A.W., 1978. Aspects of the Hydrogeochemistry of the Karoo Sequence in the Great Fish River Basin, Eastern Cape Province: Ph.D. Thesis. University of the Orange Free State, Bloemfontein, pp. 307.
- Tordiffe, E.A.W., Botha, B.J.V., Looek, J.C., 1985. The relationship between the geology and the groundwater quality of the Great Fish River catchment north of Kommadagga. *Water South Africa* 11 (2), 99–106.
- Visser, J.N.J., Dukas, B.A., 1979. Upward-fining fluvial megacycles in the Beaufort Group, north of Graaff-Reinet, Cape Province. *Trans. Geol. Soc. S. Afr.* 82, 149–154.
- Winter, H.de la R., 1984. Tectonostratigraphy as applied to the analysis of South African Phanerozoic basins: transactions. *Geological Society South Africa* 87, 169–179.
- Wrafter, J.P., Graham, J.R., 1989. Ophiolitic detritus in the Ordovician sediments of South Mayo Ireland. *J. Geol. Soc.* 146, 213–215 London.
- Yang, J., Du, Y., 2017. Weathering geochemistry and palaeoclimate implication of the early Permian mudstones from eastern Henan Province, north China. *J. Palaeogeogr.* 6 (4), 370